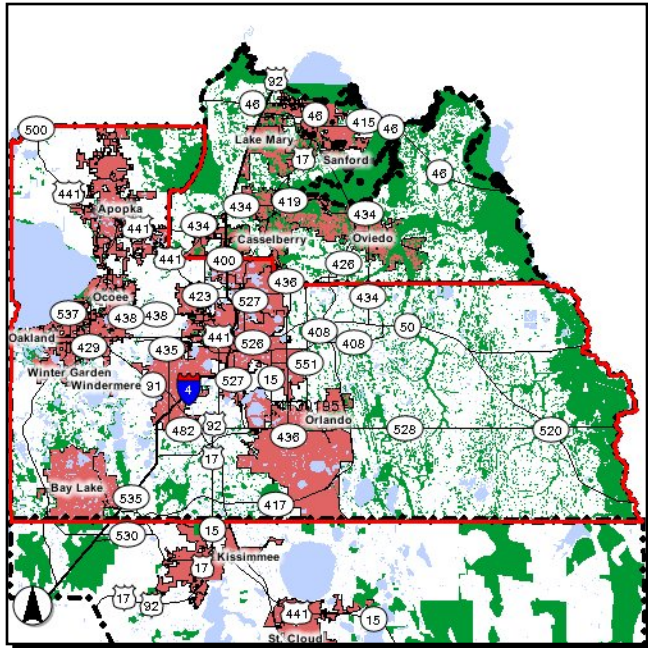


**Section 17 - Miscellaneous Projects**

---

**4130195**

**Countywide**



**Work Summary:** TRAFFIC SIGNALS

**From:**

**To:**

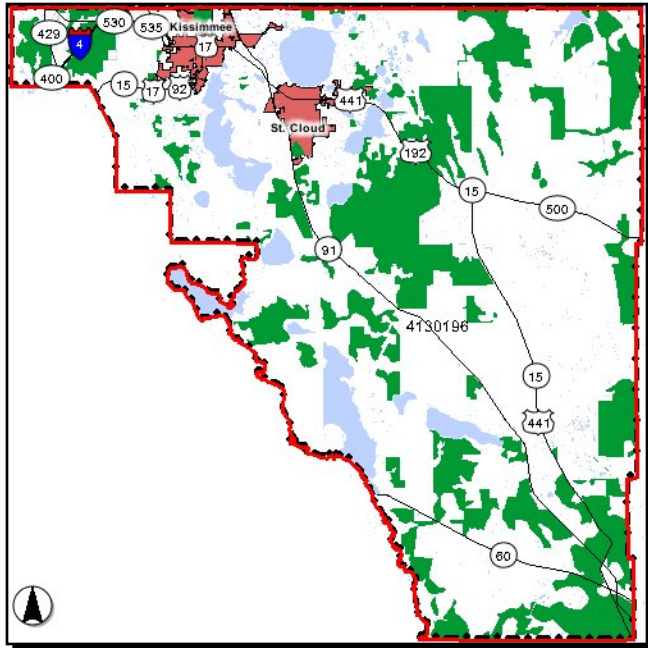
**Jurisdiction:** Orange

Phase	Fund Source	2009/10	2010/11	2011/12	2012/13	2013/14	Total
OPS	DDR	649,000	668,000	688,000	709,000	731,000	3,445,000
<b>Total</b>		<b>649,000</b>	<b>668,000</b>	<b>688,000</b>	<b>709,000</b>	<b>731,000</b>	<b>3,445,000</b>

**Project Description:** Traffic Signal Maintenance Reimbursement

**4130196**

**Countywide**



**Work Summary:** TRAFFIC SIGNALS

**From:**

**To:**

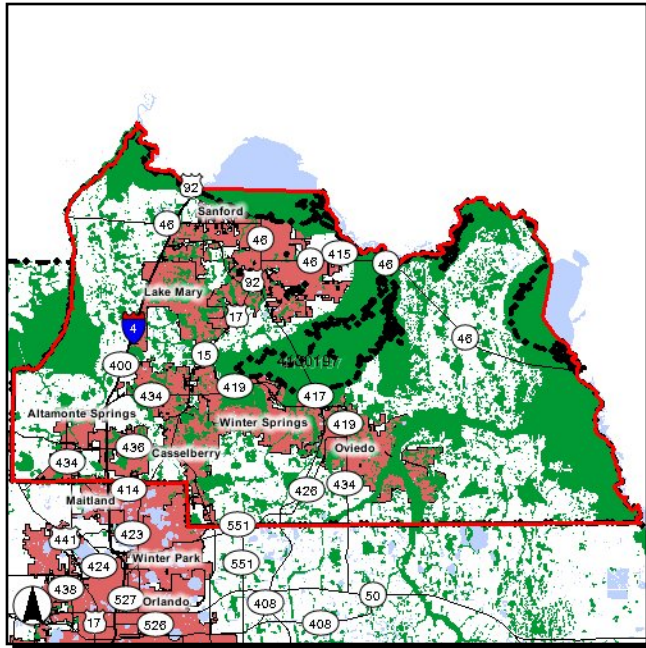
**Jurisdiction:** Osceola

Phase	Fund Source	2009/10	2010/11	2011/12	2012/13	2013/14	Total
OPS	DDR	97,000	100,000	103,000	107,000	110,000	<b>517,000</b>
<b>Total</b>		<b>97,000</b>	<b>100,000</b>	<b>103,000</b>	<b>107,000</b>	<b>110,000</b>	<b>517,000</b>

**Project Description:** Traffic Signal Maintenance Reimbursement

4130197

Countywide



Work Summary: TRAFFIC SIGNALS

From:

To:

Jurisdiction: Seminole

Phase	Fund Source	2009/10	2010/11	2011/12	2012/13	2013/14	Total
OPS	DDR	247,000	254,000	262,000	270,000	278,000	1,311,000
<b>Total</b>		<b>247,000</b>	<b>254,000</b>	<b>262,000</b>	<b>270,000</b>	<b>278,000</b>	<b>1,311,000</b>

Project Description: Traffic Signal Maintenance Reimbursement

**4222846**

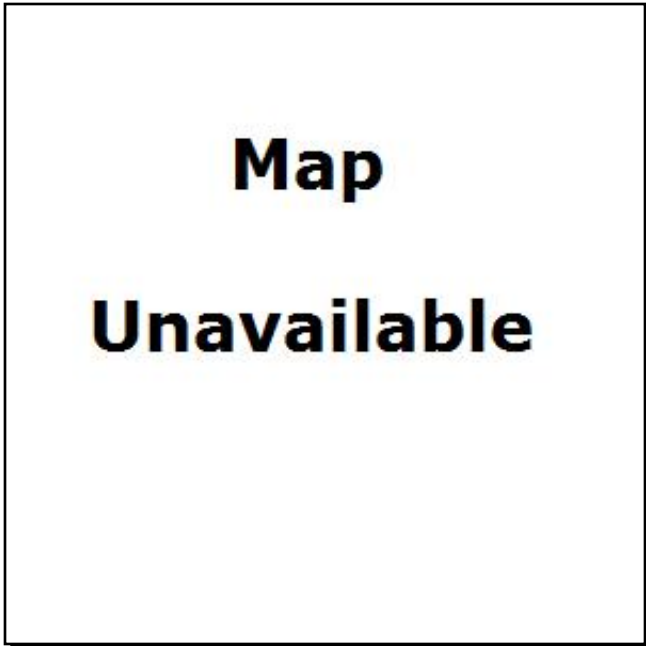
**Safe Routes to School Projects Agreement**

**Work Summary:** TRAINING

**From:**

**To:**

**Jurisdiction:** Orange



Phase	Fund Source	2009/10	2010/11	2011/12	2012/13	2013/14	Total
OPS	SR2N	7,000	0	0	0	0	<b>7,000</b>
CAP	SR2N	50,000	0	0	0	0	<b>50,000</b>
<b>Total</b>		<b>57,000</b>	<b>0</b>	<b>0</b>	<b>0</b>	<b>0</b>	<b>57,000</b>

**Project Description:** Training

**4222848**

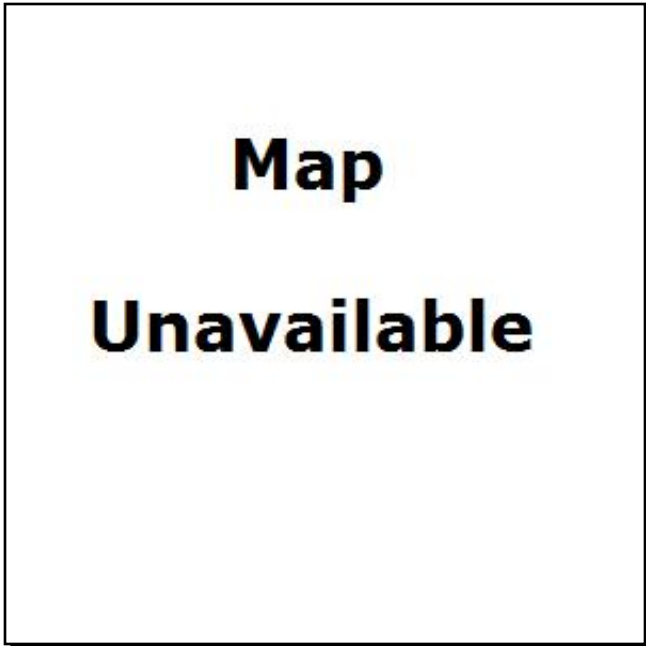
**Safe Routes to School Projects Agreement**

**Work Summary:** TRAINING

**From:**

**To:**

**Jurisdiction:** Osceola



Phase	Fund Source	2009/10	2010/11	2011/12	2012/13	2013/14	Total
OPS	SR2N	0	5,000	5,000	0	0	10,000
<b>Total</b>		<b>0</b>	<b>5,000</b>	<b>5,000</b>	<b>0</b>	<b>0</b>	<b>10,000</b>

**Project Description:** Training

**4222849**

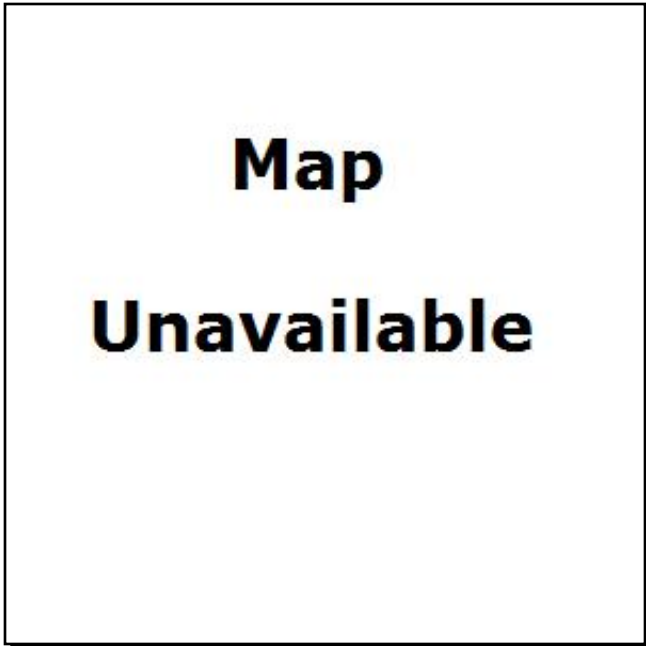
**Safe Routes to School Projects Agreement**

**Work Summary:** TRAINING

**From:**

**To:**

**Jurisdiction:** Seminole



Phase	Fund Source	2009/10	2010/11	2011/12	2012/13	2013/14	Total
OPS	SR2N	5,000	10,000	10,000	0	0	<b>25,000</b>
OPS	SR2E	22,681	0	0	0	0	<b>22,681</b>
<b>Total</b>		<b>27,681</b>	<b>10,000</b>	<b>10,000</b>	<b>0</b>	<b>0</b>	<b>47,681</b>

**Project Description:** Training

**4250181**

**Emergency Operations**

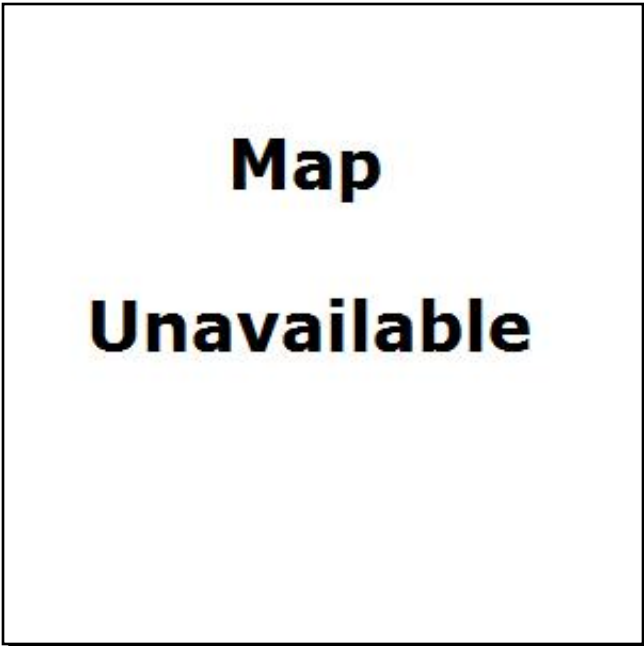
**Work Summary:**

EMERGENCY OPERATIONS

**From:** Countywide

**To:**

**Jurisdiction:** Orange



Phase	Fund Source	2009/10	2010/11	2011/12	2012/13	2013/14	Total
OPS	FEMA	2,000	0	0	0	0	2,000
<b>Total</b>		<b>2,000</b>	<b>0</b>	<b>0</b>	<b>0</b>	<b>0</b>	<b>2,000</b>

**Project Description:** Emergency Operations

**4250291**

**Emergency Operations**

**Work Summary:**

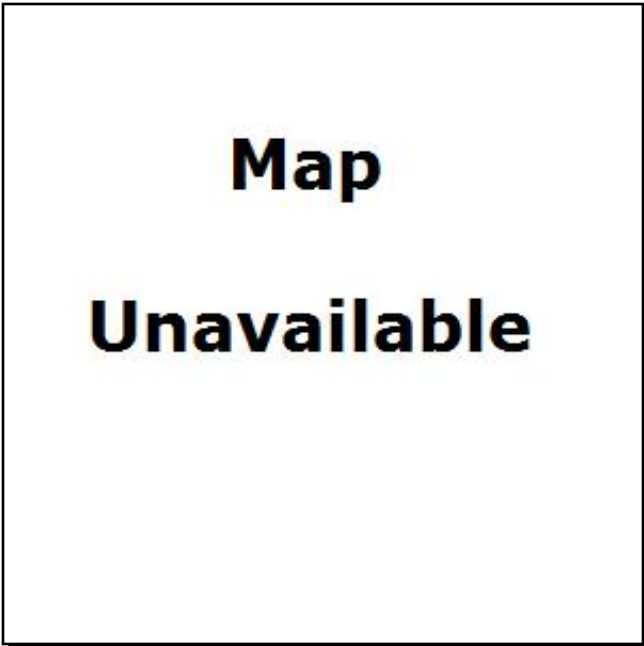
EMERGENCY  
OPERATIONS

**From:** Countywide

**To:**

**Jurisdiction:**

Seminole



Phase	Fund Source	2009/10	2010/11	2011/12	2012/13	2013/14	Total
OPS	FEMA	4,000	0	0	0	0	4,000
<b>Total</b>		<b>4,000</b>	<b>0</b>	<b>0</b>	<b>0</b>	<b>0</b>	<b>4,000</b>

**Project Description:**

**4269251**

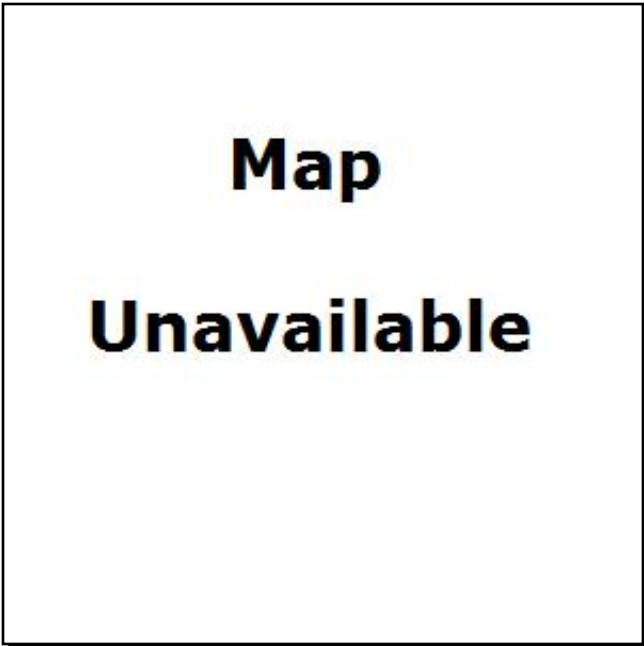
**Emergency Operations (Wild Fires)**

**Work Summary:** EMERGENCY OPERATIONS

**From:** Countywide

**To:**

**Jurisdiction:** Orange



Phase	Fund Source	2009/10	2010/11	2011/12	2012/13	2013/14	Total
OPS	FEMA	5,000	0	0	0	0	5,000
<b>Total</b>		<b>5,000</b>	<b>0</b>	<b>0</b>	<b>0</b>	<b>0</b>	<b>5,000</b>

**Project Description:** Emergency Operations (Wild Fires)

**4269551**

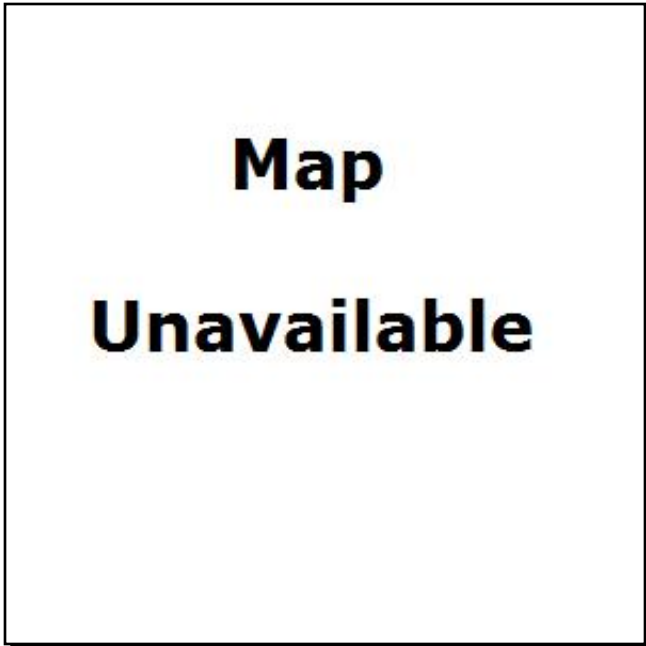
**SR 426**

**Work Summary:** EMERGENCY OPERATIONS

**From:** at Lake Jessup Ave.

**To:**

**Jurisdiction:** Seminole



Phase	Fund Source	2009/10	2010/11	2011/12	2012/13	2013/14	Total
OPS	FEMA	1,000	0	0	0	0	1,000
<b>Total</b>		<b>1,000</b>	<b>0</b>	<b>0</b>	<b>0</b>	<b>0</b>	<b>1,000</b>

**Project Description:** Emergency Operations (Flooding)