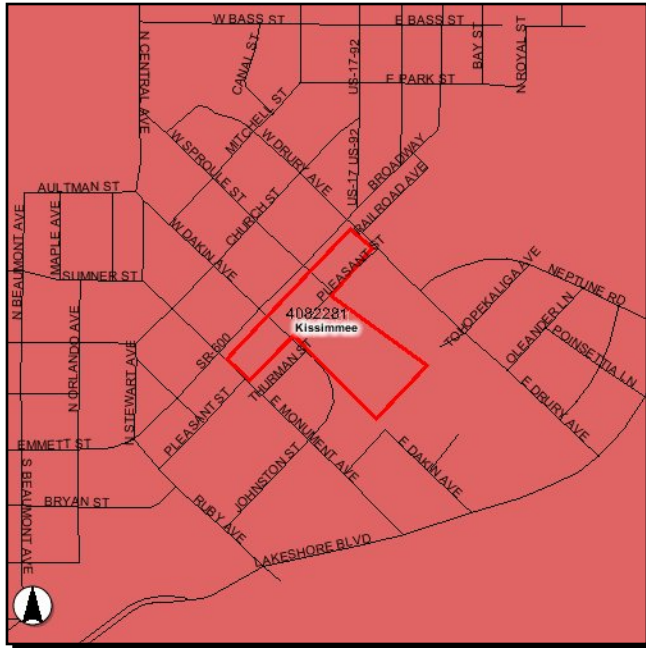


Section 15 - Intermodal

4082281

Kissimmee Intermodal Center



Work Summary: INTERMODAL CAPACITY **From:**

To:

Jurisdiction: Orange

Phase	Fund Source	2009/10	2010/11	2011/12	2012/13	2013/14	Total
CAP	FTA	500,000	0	0	0	0	500,000
CAP	LF	5,000,000	0	0	0	0	5,000,000
Total		5,500,000	0	0	0	0	5,500,000

Project Description: Kissimmee Intermodal Center

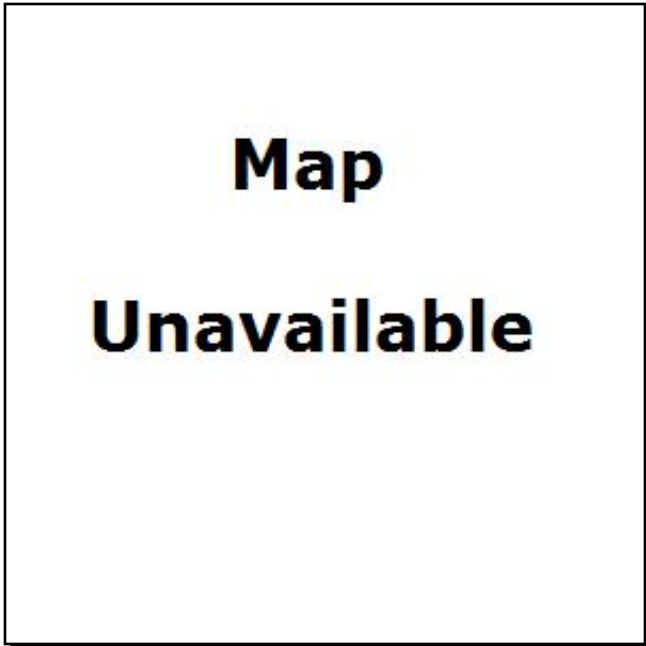
4084091

ITS Enhanced Circulator

Work Summary: INTERMODAL CAPACITY **From:**

To:

Jurisdiction: Orange



Phase	Fund Source	2009/10	2010/11	2011/12	2012/13	2013/14	Total
CAP	FTA	1,149,000	0	0	0	0	1,149,000
CAP	LF	287,000	0	0	0	0	287,000
Total		1,436,000	0	0	0	0	1,436,000

Project Description: North Orange / South Seminole ITS Enhanced Circulator Engineering, Design & Construction

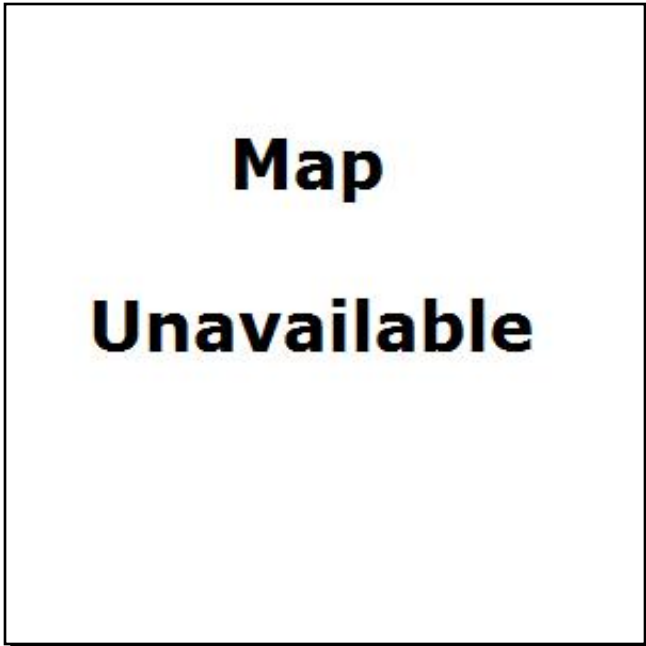
4267911

Winter Park Amtrak Station Shelter

Work Summary: INTERMODAL CAPACITY **From:**

To:

Jurisdiction: Orange



Phase	Fund Source	2009/10	2010/11	2011/12	2012/13	2013/14	Total
CAP	LF	237,000	0	0	0	0	237,000
CAP	DFTA	950,000	0	0	0	0	950,000
Total		1,187,000	0	0	0	0	1,187,000

Project Description: Winter Park Amtrak Station Public Transportation Shelter

4267921

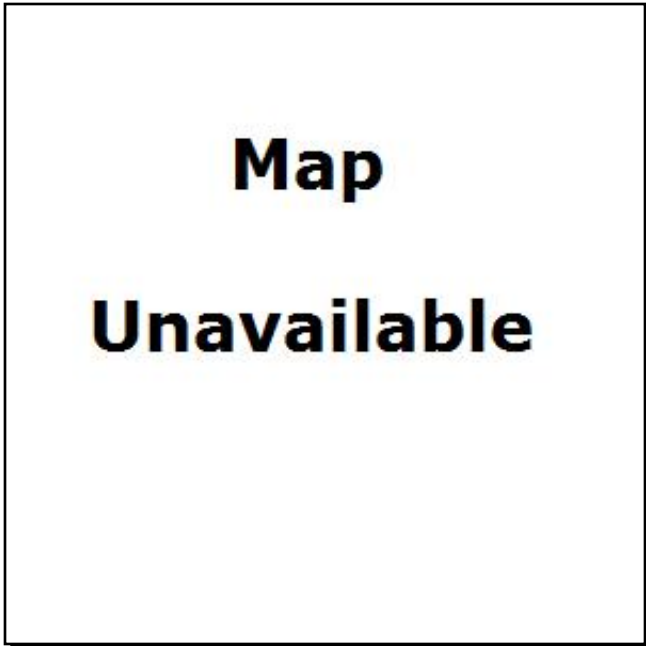
Construction of Bus Stations

Work Summary: INTERMODAL CAPACITY **From:**

To:

Jurisdiction:

Seminole

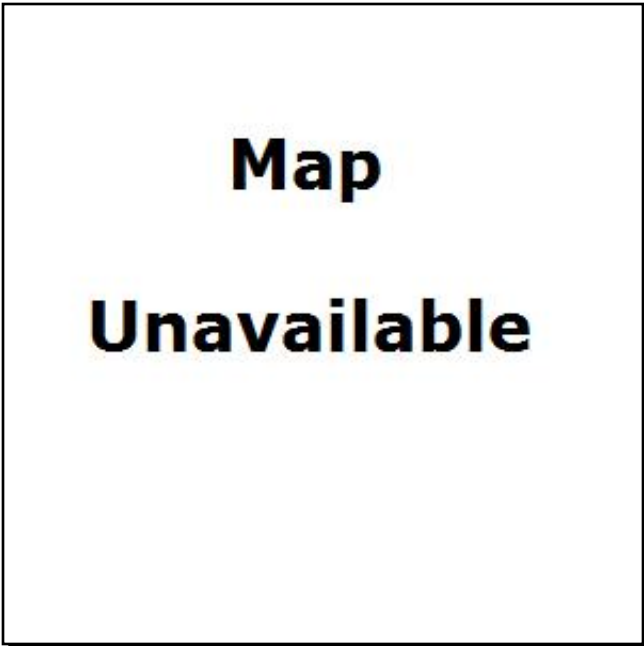


Phase	Fund Source	2009/10	2010/11	2011/12	2012/13	2013/14	Total
CAP	LF	356,000	0	0	0	0	356,000
CAP	DFTA	1,425,000	0	0	0	0	1,425,000
Total		1,781,000	0	0	0	0	1,781,000

Project Description: Construction of Bus Stations in Altamonte Springs, Lake Mary, Longwood, & Sanford

Intermodal

LYNX Central Station



Work Summary: INTERMODAL CAPACITY **From:**

To:

Jurisdiction: Orange

Phase	Fund Source	2009/10	2010/11	2011/12	2012/13	2013/14	Total
CAP	FTA	1,021,000	1,021,000	217,000	0	0	2,259,000
Total		1,021,000	1,021,000	217,000	0	0	2,259,000

Project Description: LYNX Central Station (State Infrastructure Bank Loan Repayment through FY 2010/11)